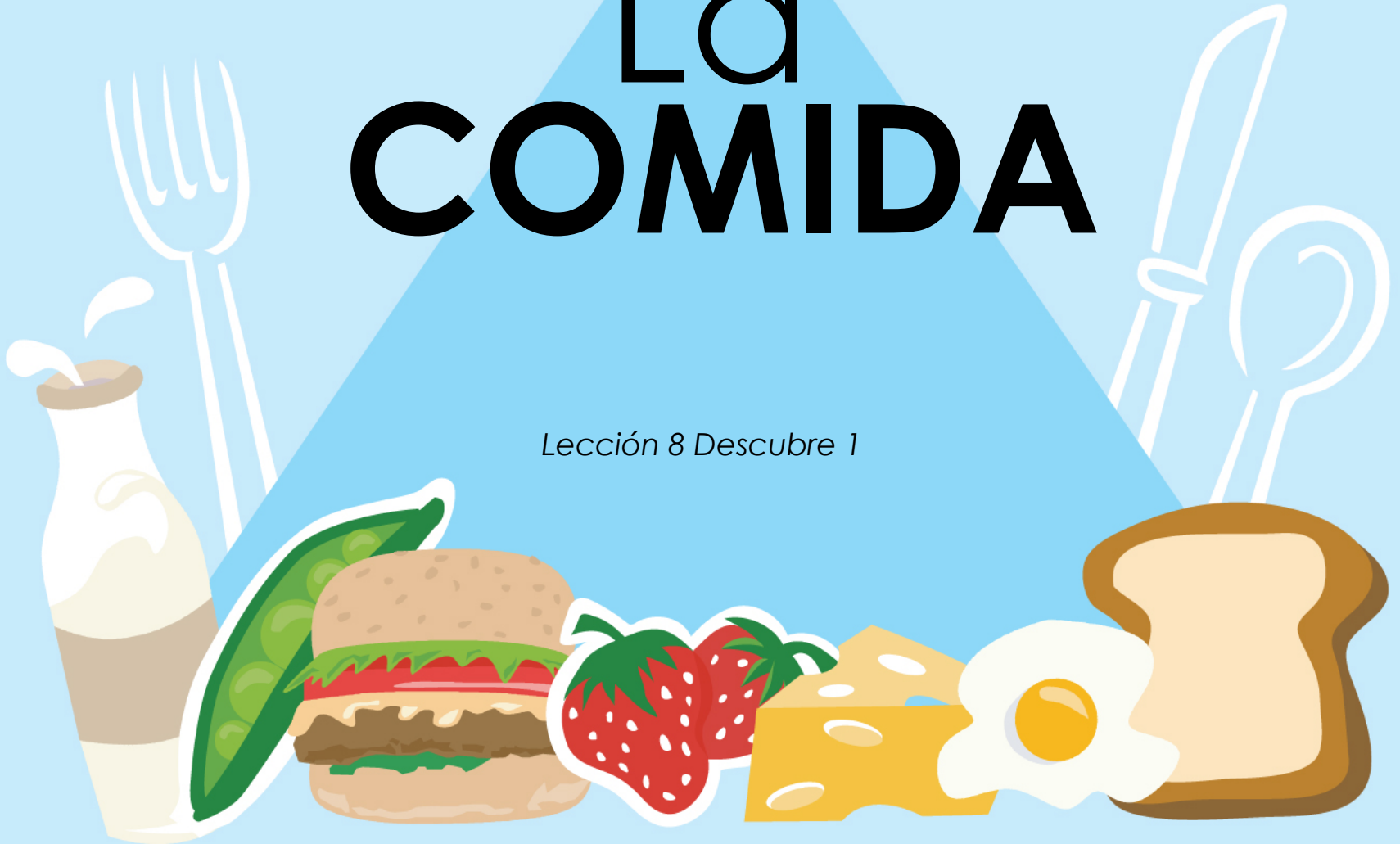


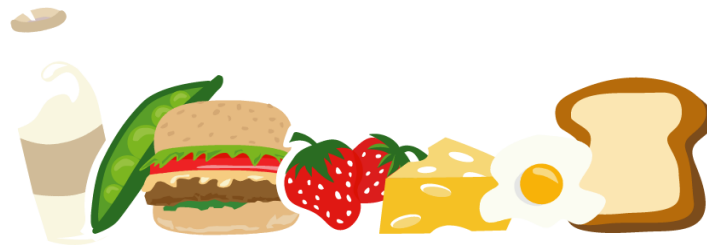
# La COMIDA

*Lección 8 Descubre 1*



# Práctica

- Completa las actividades 4 y 5 por de la página 276  
¡FICHAS!



**8.2** Double object pronouns**ANTE TODO**

In **Lecciones 5** and **6**, you learned that direct and indirect object pronouns replace nouns and that they often refer to nouns that have already been referenced. You will now learn how to use direct and indirect object pronouns together. Observe the following diagram.

**Indirect Object  
Pronouns**

me	nos
te	os
le (se)	les (se)

+

**Direct Object  
Pronouns**

lo	los
la	las

## 8.2 Double object pronouns Tutorial

- ▶ When direct and indirect object pronouns are used together, the indirect object pronoun always precedes the direct object pronoun.

I.O. D.O.  
La camarera **me** muestra **el menú.**  
*The waitress shows me the menu.*



DOUBLE OBJECT PRONOUNS  
La camarera **me lo** muestra.  
*The waitress shows it to me.*

I.O. D.O.  
**Nos** sirven **los platos.**  
*They serve us the dishes.*



DOUBLE OBJECT PRONOUNS  
**Nos los** sirven.  
*They serve them to us.*

I.O. D.O.  
Maribel **te** pidió **una hamburguesa.**  
*Maribel ordered a hamburger for you.*

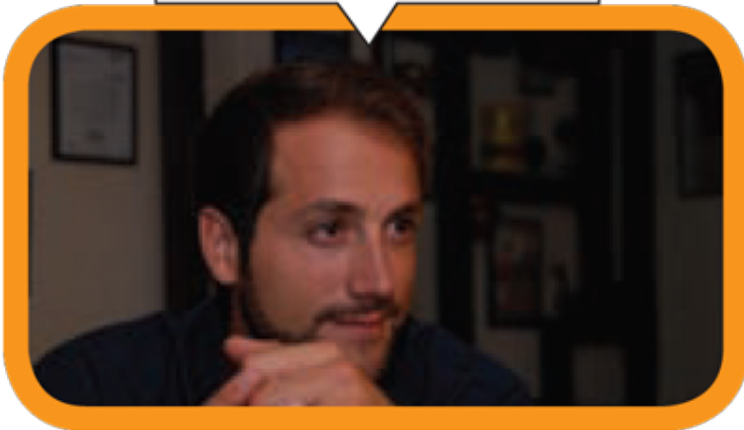


DOUBLE OBJECT PRONOUNS  
Maribel **te la** pidió.  
*Maribel ordered it for you.*

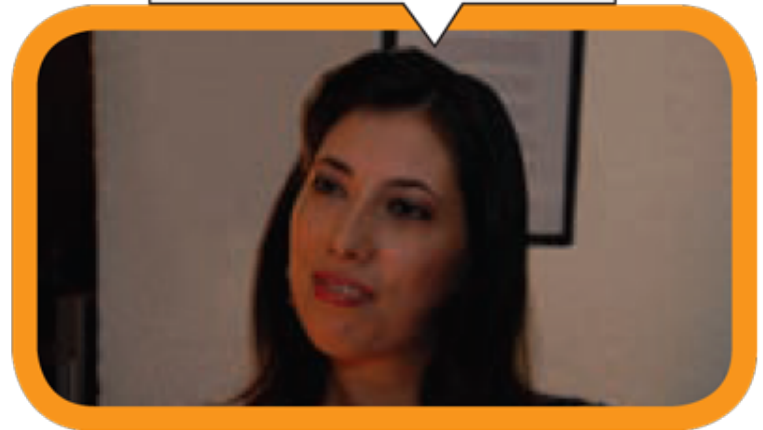
## 8.2 Double object pronouns



¿Quién te los dio?



Me los compró un  
chico muy guapo.



## 8.2 Double object pronouns



- ▶ In Spanish, two pronouns that begin with the letter **I** cannot be used together. Therefore, the indirect object pronouns **le** and **les** always change to **se** when they are used with **lo**, **los**, **la**, and **las**.

I.O.

D.O.

**Le** escribí **la carta**.*I wrote him the letter.*DOUBLE OBJECT  
PRONOUNS**Se la** escribí.*I wrote it to him.*

I.O.

D.O.

**Les** sirvió **los sándwiches**.*He served them the sandwiches.*DOUBLE OBJECT  
PRONOUNS**Se los** sirvió.*He served them to them.*

## 8.2 Double object pronouns



- ▶ Because **se** has multiple meanings, Spanish speakers often clarify to whom the pronoun refers by adding **a usted**, **a él**, **a ella**, **a ustedes**, **a ellos**, or **a ellas**.

¿El sombrero? Carlos **se** lo vendió **a ella**.

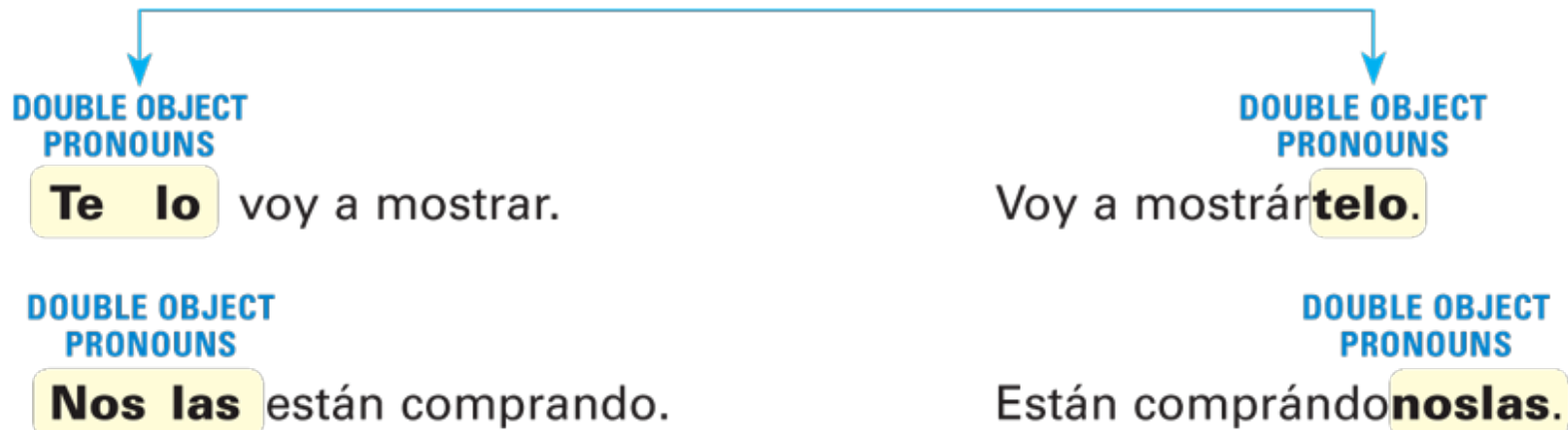
*The hat? Carlos sold it to her.*

¿Las verduras? Ellos **se** las compran **a usted**.

*The vegetables? They are buying them for you.*

## 8.2 Double object pronouns Tutorial

- ▶ Double object pronouns are placed before a conjugated verb. With infinitives and present participles, they may be placed before the conjugated verb or attached to the end of the infinitive or present participle.



## 8.2 Double object pronouns



Mi abuelo **me lo** está leyendo.  
Mi abuelo está leyéndom**elo**.



El camarero **se los** va a servir.  
El camarero va a servírs**elos**.

## 8.2 Double object pronouns Tutorial

- ▶ As you can see above, when double object pronouns are attached to an infinitive or a present participle, an accent mark is added to maintain the original stress.

**8.2 Double object pronouns**

**Escribe el pronombre de objeto directo o indirecto que falta en cada oración.**

**Objeto directo**

1. ¿La ensalada? El camarero nos la la sirvió.
2. ¿El salmón? La dueña me \_\_\_\_\_ recomienda.
3. ¿La comida? Voy a prepararte \_\_\_\_\_.
4. ¿Las bebidas? Estamos pidiéndose \_\_\_\_\_.
5. ¿Los refrescos? Te \_\_\_\_\_ puedo traer ahora.
6. ¿Los platos de arroz? Van a servirnos \_\_\_\_\_ después.